

**NT - Indigenous Ranger Groups**

- 1 Anangu Luritjiku Rangers
- 2 Anmatyerr Rangers
- 3 Muru-warinyi Ankkul Rangers
- 4 Tjuwanpa Rangers
- 5 Tjuwanpa Women Rangers
- 6 Kaltukatjara Rangers
- 7 Warlpiri Rangers
- 8 North Tanami Rangers
- 9 Bulgul Land and Sea Rangers
- 10 Malak Malak Land and Water Management Rangers
- 11 Wagiman Rangers
- 12 Thamarurr Rangers
- 13 Waanyi Garawa Rangers
- 14 Garawa Rangers
- 15 Li-Anthawirriyara Sea Rangers
- 16 Tiwi Rangers
- 17 Anindilyakwa Rangers
- 18 Warnbi Rangers
- 19 Werenbun Rangers
- 20 Crocodile Islands Rangers
- 21 Yirralka Rangers
- 22 Dhimurru Rangers
- 23 Bawinanga Rangers
- 24 Warddeken Rangers
- 25 Garngi Land and Sea Management Rangers
- 26 Gumurr Marthakal Rangers
- 27 Yugul Mangi Land and Sea Management Rangers
- 28 Arafura Swamp Ranger Groups
- 29 Mardbalk Land and Sea Management Rangers
- 30 Mimal Rangers
- 31 Numbulwar Numburindi Land and Sea Management Rangers
- 32 Jawoyn Rangers
- 33 Njanjma Rangers
- 34 Mangarrayi Rangers
- 35 Tjakura Rangers
- 36 Asyrikarrak Kirim Rangers

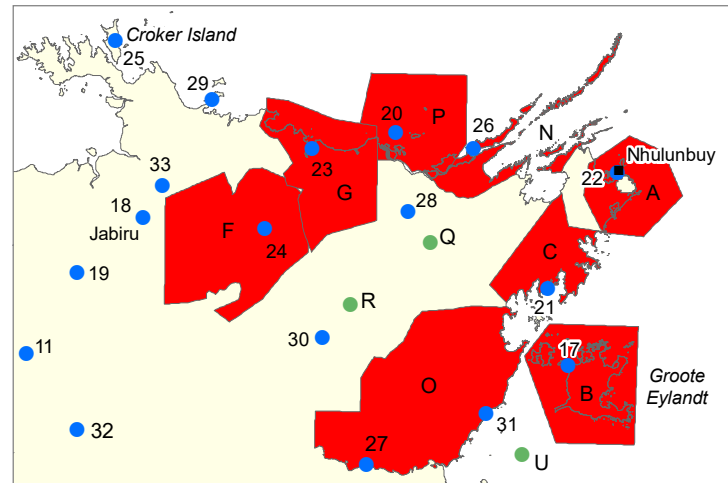
**WA - Indigenous Ranger Groups**

- 1 Yawoorroong Miriuwung Gajerrong Rangers
- 2 Balangarra Rangers
- 3 Bardi Jawi Rangers
- 4 Gooniyandi Rangers
- 5 Karajarri Rangers
- 6 Yanunijarra Ngurrara Rangers
- 7 Nyikina Mangala Rangers
- 8 Nyul Nyul Rangers
- 9 Paruku Rangers
- 10 Unguu Rangers
- 11 Wunggurr Rangers
- 12 Jigalong Rangers
- 13 Punmu Rangers
- 14 Pamngurr Rangers
- 15 Kunawarriti Rangers
- 16 Warburton Women Rangers
- 17 Warburton Men Rangers
- 18 Blackstone Rangers
- 19 Warakurna Rangers
- 20 Kija Rangers
- 21 Nyangumarta Rangers
- 22 Goldfields Land Management Rangers
- 23 Spinifex Rangers
- 24 Mid West Aboriginal Rangers (3 groups)
- 25 Ngadju Rangers
- 26 Kiwirrkurra Rangers
- 27 Yawuru Rangers
- 28 Tjaltjiraak Rangers

**SA - Indigenous Ranger Groups**

- 1 APY Land Management Rangers
- 2 Gawler Ranges Rangers
- 3 Nantawarrina Rangers
- 4 Ngarrindjeri Rangers
- 5 Raukkan Rangers
- 6 Australian Landscapes Trust Ranger Team
- 7 Yalata Rangers
- 8 Oak Valley Rangers
- 9 Arabana Rangers
- 10 Coorong and Murray Lower Lakes Area Rangers
- 11 River Murray and Mallee Aboriginal Corporation Ranger Team

# Indigenous Protected Areas - Commonwealth Funded Indigenous Ranger Programs - December 2022



**NT - IPAs**

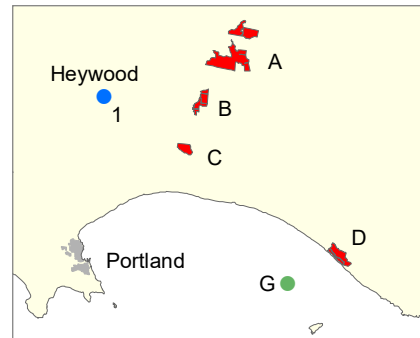
- A Dhimurru
- B Anindilyakwa
- C Laynhapuy
- D Northern Tanami
- E Angas Downs
- F Warddeken
- G Djelk
- H Marri-Jabin (Thamurrur)
- I Yanyuwa (Barni - Wardimantha Awara)
- J Southern Tanami
- K Wardaman
- L Katiti Petermann
- M Ganalanga-Mindibirrina
- N Marthakal
- O South-East Arnhem Land
- P Crocodile Islands Maringa
- Q Arafura Swamp
- R Mimal
- S Tiwi Islands
- T Haasts Bluff
- U South East Arnhem Sea Country

**WA - IPAs**

- A Paruku
- B Ngaanyatjarra
- C Ninghan
- D Warlu Jilajaa Jumu
- E Unguu
- F Birriliburu
- G Bardi Jawi
- H Wilinggin
- I Dambimangari
- J Balangarra
- K Karajarri
- L Kiwirrkurra
- M Nyangumarta Warrarn
- N Matuwa and Kurrara-Kurrara
- O Yawuru
- P Ngururrpa
- Q Ngadju
- R Anangu Tjutaku
- S Martu
- T Ngurra Kayanta
- U Nyikina Mangala
- V Nyul Nyul
- W Mayala
- X Tujukana pa Karajarri Kura Jurrar Sea Country
- Y Yamatji Sea Country

**SA - IPAs**

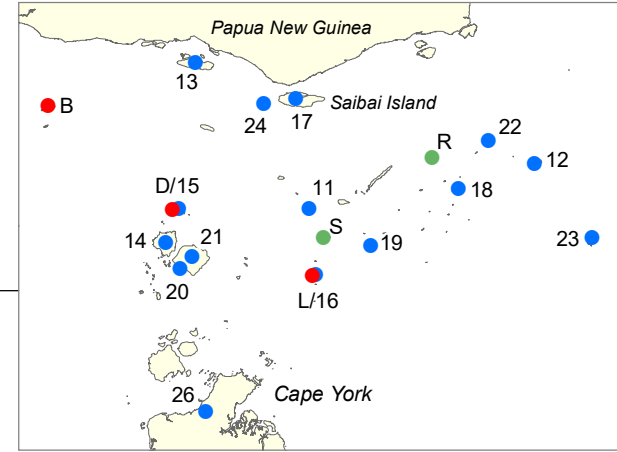
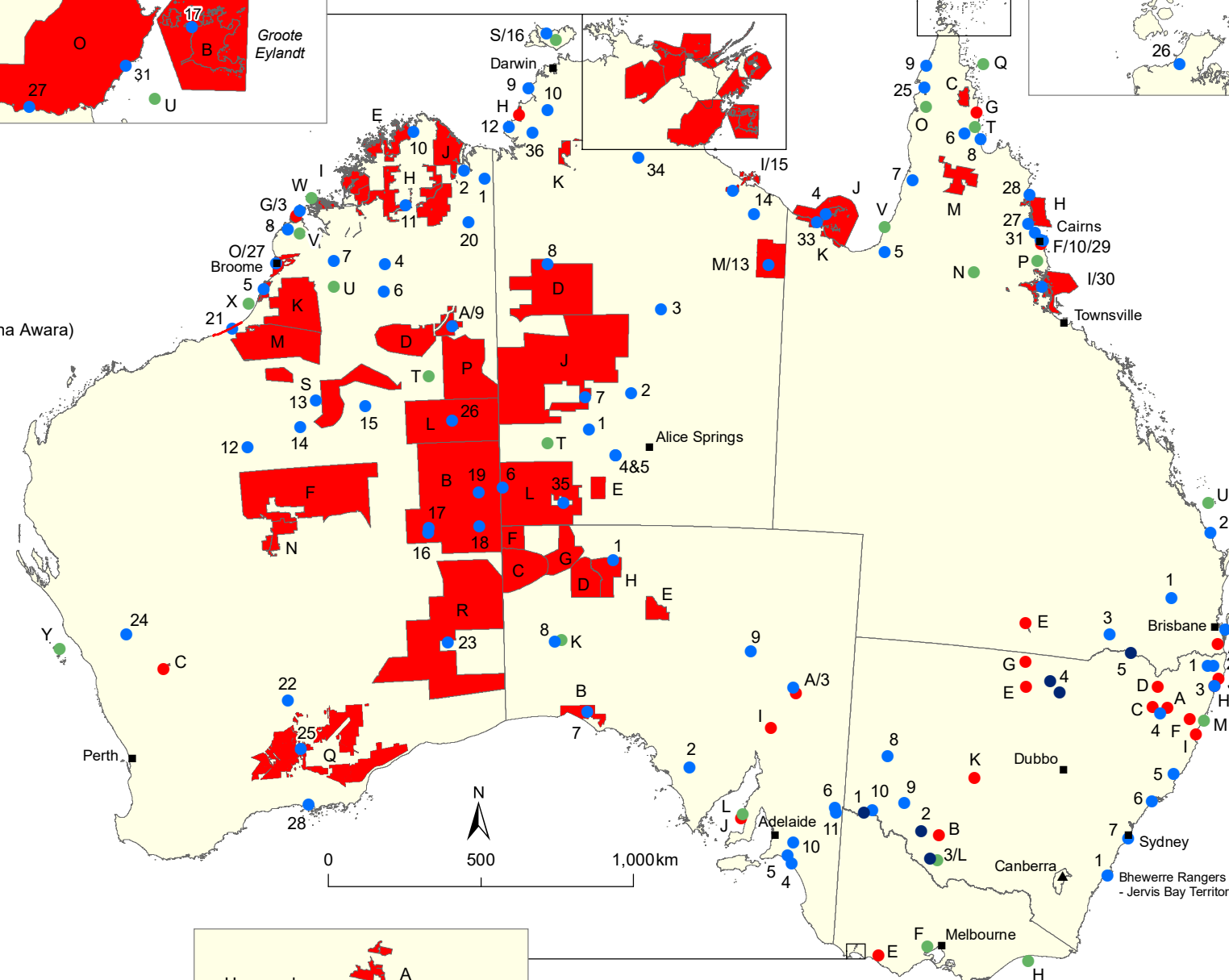
- A Nantawarrina
- B Yalata
- C Watarru
- D Walalkara
- E Mount Willoughby
- F Kalka - Pipalyatjara
- G Apara - Makiri - Puntji
- H Antara - Sandy Bore
- I Yappala
- J Wardang Island
- K Maralinga Tjarutja Lands
- L Wardang Island Sea Country



**VIC - IPAs**

- A Lake Condah
- B Kurtonitj
- C Tyrendarra
- D Deen Maar
- E Framlingham Forest
- F Wurdji Youang
- G Gunditjmarra Sea Country
- H Nanjet to Mallacoota Sea Country

- Commonwealth Funded Indigenous Ranger Groups
- Murray-Darling Basin River Rangers Groups
- ▲ NIAA National Office
- NIAA Regional Office
- Dedicated Indigenous Protected Areas
- IPA Consultation Projects



**QLD - IPAs**

- A Guanaba
- B Warul Kawa
- C Kaanju Ngaachi
- D Pulu
- E Jamba Dhandan Duringala
- F Mandingabay Yidinji
- G Angkum
- H Eastern Kuku Yalanji
- I Girringun
- J Thuwathu/Bujimulla
- K Nijinda Durlga
- L Warraberalgal & Porumalgal
- M Olkola
- N Talaroo
- O Wik, Wik Way and Kugu
- P Mamu
- Q Wuthathi Shelburne Bay
- R Masigalal
- S Magani Lagaugal
- T Umpila
- U Port Curtis Coral Coast Sea Country
- V Kurtijar Sea Country

**NSW - IPAs**

- A Wattleidge
- B Toogimbie
- C Tarriva Kurrukun
- D Boorabee and The Willows
- E Brewarrina Ngemba Billabong
- F Dorodong
- G Weilmoringle
- H Minyurnai
- I Gumma
- J Ngunya Jargoan
- K Mawonga
- L Werai Forest
- M Ngiyambandigay Gaagal Sea Country

**NSW - Indigenous Ranger Groups**

- 1 Githabul Rangers
  - 2 Ngulingah Aboriginal Rangers
  - 3 Jahnala Yenbalehla Rangers
  - 4 Wattleidge & Tarriva Kurrukun Rangers
  - 5 Mid North Coast Indigenous Rangers
  - 6 Worimi Green Team Rangers
  - 7 Gamay Rangers
  - 8 Barkandji River Rangers
  - 9 Willandra Lakes Region Indigenous Rangers
  - 10 Barkindji Maraura Elders Environment Team
- Murray-Darling Basin River Ranger Groups**
- 1 Lindsay Mulcra and Wallpolla Islands River Rangers
  - 2 Gayini River Rangers
  - 3 Yarkuwa Indigenous River Rangers
  - 4 Ngarrangarra-li Walaaybaa Walgett River Rangers
  - 5 Northern Gomeri River Rangers

**VIC - Indigenous Ranger Groups**

- 1 Budj Bim Rangers

**TAS - Indigenous Ranger Groups**

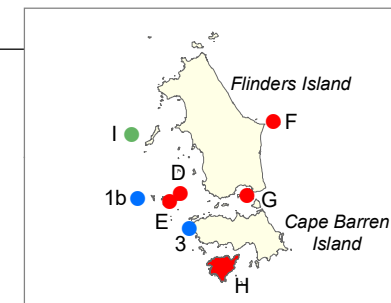
- 1 milythina pakana Rangers (3 groups incl. 1a & 1b)
- 2 Tasmania PWS Trainees
- 3 truwana Rangers

**ACT/Jervis Bay Territory - Indigenous Ranger Groups**

- 1 Bhewerre Rangers

**TAS - IPAs**

- A Preminghana
- B Risdon Cove
- C Putalina
- D Mount Chappell Island
- E Badger Island
- F Babel Island
- G Great Dog Island
- H lungatalanana
- I tayaritja Sea Country



Data Sources: Indigenous Protected Areas, Indigenous Ranger Groups © Department of Climate Change, Energy, the Environment and Water and National Indigenous Australians Agency. Localities, State and Territory Borders © Commonwealth of Australia, Geoscience Australia.

Disclaimer: The views and opinions expressed in this publication are those of the authors and do not necessarily reflect those of the Australian Government.

While reasonable efforts have been made to ensure that the contents of this publication are factually correct, the Commonwealth does not accept responsibility for the accuracy or completeness of the contents, and shall not be liable for any loss or damage that may be occasioned directly or indirectly through the use of, or reliance on, the contents of this publication.

Map produced by: Data and Analysis Branch, Commonwealth of Australia, Department of Climate Change, Energy, the Environment and Water (DCCCEEW).

Abers Equal Area projection on the GDA94 Datum, Date: 16/12/2022

